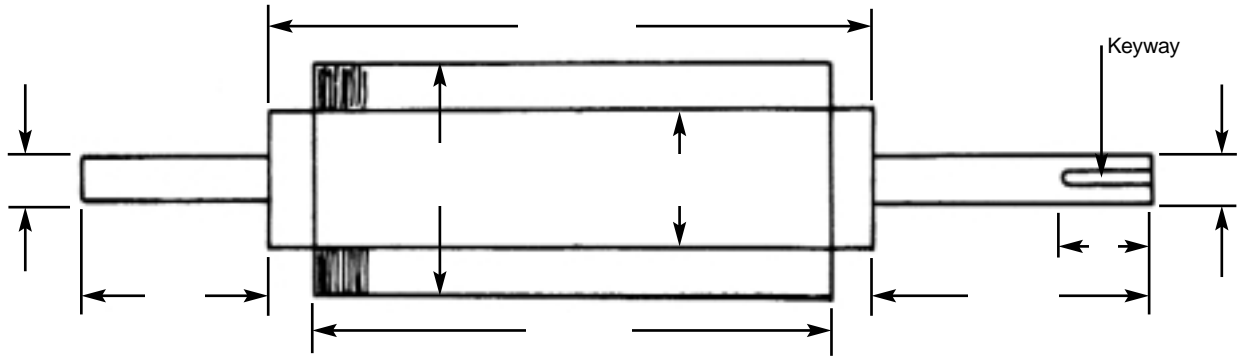




# THE INDUSTRIAL BRUSH COMPANY, INC.

Committed to Quality and Service Since 1946

## Brush Specification Sheet / Request Form



Please print-out, complete the information, and fax back to us at 973-575-6169

Company Name: \_\_\_\_\_

Address: \_\_\_\_\_

Your Name: \_\_\_\_\_ Position: \_\_\_\_\_

Phone: \_\_\_\_\_ Fax: \_\_\_\_\_ e-mail: \_\_\_\_\_

Brush Application: \_\_\_\_\_

Is brush used in a purchased piece of equipment? \_\_\_\_\_ Any identifying Brush numbers? \_\_\_\_\_

Condition at the Brushing Station:  Dry  Wet  Immersed Temperature \_\_\_\_\_

Solvents \_\_\_\_\_ - Explain \_\_\_\_\_

Physical Limitations: O.D. \_\_\_\_\_ Min / Max Length \_\_\_\_\_ / \_\_\_\_\_ Speed \_\_\_\_\_

Brush Pattern:  Full Dense  Med. Dense  Med. Open  Open  Spiral  Herringbone

Fill Material:  Nylon  Natural Bristle  Natural Fiber  Steel  Stainless Steel  Stiffness (diameter of fill material)

Mechanical Requirements: RPM of Brush: \_\_\_\_\_ Is balancing required? \_\_\_\_\_

Are there any Static Problems (electrical charges) \_\_\_\_\_

Answering these basic questions will help us to visualize your application.

From this point, feel free to fax us this introductory page, or you can read further through our Design section. This section will assist you in the process of understanding basic brush principles and design. The drawings are printable, and can be used to write in dimensions that are taken off an old brush that may need replacing. They can also be used in addition to this Request Form if you are an engineer that has ideas that need help in getting from theory to paper.

If you cannot determine what best suites your application, once you begin a dialog with our sales department, we will help to walk you through the different designs to determine what best fits your application. You can always go back to the web page as a reference, as we work through the building and design process.